



# 2020

ANNUAL REPORT 



# FUNDASAUN ALOLA

"Strong Women Strong Nation - Feto Forte Nasaun Forte"

## VISION:

**WOMEN AND CHILDREN ENJOY EQUAL STATUS IN ALL ASPECTS OF LIFE**

(Priority, Access, Participation, Role in Decision Making, Enjoyment of Benefits)  
THROUGH DEDICATION, EDUCATION, ECONOMIC VIABILITY, STRONG WOMEN LEADERSHIP,  
HEALTH, COMMUNITY EMPOWERMENT AND PUBLIC POLICY DIALOGUES.

## MISSION:

*To Promote Women's Rights And Increase Women's Leadership Capacity,  
To Strengthen Small Enterprises Of Women's Groups At Grassroots Level,  
To Improve Women's And Children's Health Status, To Increase Access To And Quality Of Education  
For Women And Children, To Adopt Digital Technology As Much As Possible.*

Equality & Equity

Peace

Democracy

Non Violence

Integrity

Respect

Advocacy	Maternal & Child Health	Education	Economic Empowerment	Management
Promote Women's Human Rights	Improve Women's And Children Health Status	Improve Quality And Access To Education	Strengthen Women's Economic Participation	Effective and efficient management & HR system
<ul style="list-style-type: none"> <li>Campaign for women's human rights</li> <li>Strengthen women's leadership</li> <li>Strengthen networks with all partners</li> <li>Empower women in all areas in municipalities</li> <li>Assist women to access information and understand their rights</li> </ul>	<ul style="list-style-type: none"> <li>Reduction of IMR, MMR, MMR and Under 5 child malnutrition rate</li> <li>Promotion of exclusive breastfeeding and complementary feeding (through community-based groups at the village level )</li> <li>Empower community-based groups to support MCH at the village level</li> <li>Support MoH to implement Nutrition and MCH Program</li> <li>Program collaboration with international and government partners at national and district level</li> </ul>	<ul style="list-style-type: none"> <li>Promote the importance of education with whole community involvement</li> <li>Provide training to improve teachers' teaching ability</li> <li>Resource development in Tetun and Portuguese and using local resources</li> <li>Work collaboratively with MoE and other education organizations to develop holistic education program</li> <li>Expand Education opportunities</li> </ul>	<ul style="list-style-type: none"> <li>Improve the status of women in enterprise</li> <li>Increase income generating opportunities</li> <li>Promote economic independence for women</li> </ul>	<ul style="list-style-type: none"> <li>Establish responsive system from program management and evaluation</li> <li>Ensure transparency and accountability in financial management</li> <li>Ensure quality facilities' management and process</li> <li>Maintain endowment funds for future programs</li> <li>Performance appraisals annually and follow up on staff professional development</li> <li>Strong HR systems</li> <li>Continue to promote family friendly workspace</li> </ul>



## CHAIRWOMAN'S STATEMENT

*Dr. Kirsty Sword Gusmão, AO*

My greetings to all members of the Fundasaun Alola family – the staff, board members, partners and friends who I respect.

In 2020 I was unable to visit Timor-Leste with my family due to the Covid-19 pandemic which has caused tremendous suffering throughout the world. For me personally, this reality was particularly painful as I and my children usually visit our second homeland at least twice or three times per year. I feel a great sense of loss at not having been able to spend time with my Alola colleagues and to visit some of our target communities. Nevertheless, I am thankful that in this day and age we have technology to shorten the distance that separates us.

I give credit to the government of Timor-Leste for the efforts it has undertaken to control Covid-19 and to minimise the incidence of severe disease and loss of life. Within a very short time, the government was able to build quarantine facilities and also to launch a national campaign of awareness raising relating to Covid prevention. When schools were forced to close, the Ministry of Education reacted promptly to establish an online learning system.



Fundasaun Alola, in its turn, demonstrated tremendous capacity to adapt to the crisis through mobilising its staff and target communities to prepare and disseminate information Covid-19 in local languages and distributing humanitarian assistance to those worst affected by the restrictions on movement and other necessary preventative measures.

Throughout the world the Covid-19 pandemic has had the greatest impact on the livelihoods of women and economic and social inequalities have grown more extreme. OXFAM and other organisations have conducted research which demonstrates clearly that for the first time in the world inequality has increased in all nations of the world at the same time. The Alola Foundation's vision as

defined in its strategic plan for 2020-2024 is to guarantee equality for women in all aspects of their daily lives, starting with access to education to full participation in the political and economic life of the nation. Therefore, in the near future Alola's work will become more crucial than it normally is as the nation and its women in particular struggle to recover from the worst consequences of the pandemic.

An example of Alola's response to some of the challenges faced by women in the livelihoods sphere is a new and unique collaboration with the Grameen Foundation (USA) on a project which integrates micro credit with legal and training support, concentrated on product development and business management, but with an additional focus on mitigating the risks of domestic and gender-based violence. I am proud that the Grameen Foundation selected Alola to coordinate this important work inside Timor-Leste.

To all friends and partners, along with the valued staff and board members of Fundasaun Alola, I would like to extend my warmest vote of thanks for the commitment and hard work you have all invested in realising Alola's vision in the course of this difficult last year.

Good health to you all,



Mana KirstySword Gusmão  
Chair




# CEO's REMARKS

*Maria Imaculada Guterres*

Dearest Donors, Partners and Friends,

In relation to the Covid-19 Pandemic, in March 2020 the Government of Timor-Leste declared a State of Emergency and mandatory confinement in Dili and the other two municipalities of Bobonaro and Covalima. This situation affected the movement of staff to implement activities based on their work plan and it has demanded the organization change its work plan accordingly to include some activities which respond to the prevention of Covid-19 transmission. However the feelings of fear of the virus could not stand in the way of our staff's commitment to the cause of vulnerable women and children. Thus, during the year, our staff continued to make their best efforts to support our beneficiaries within this unpredictable situation through the programs of Maternal and Child Health, Advocacy, Education and Economic Empowerment. The year 2020 is the first year of the implementation of our new Strategic Plan of 2020-2024 which will lead us to improve the wellbeing of our women and children in this beloved country. Therefore, it is a privilege for me to present the Alola Foundation's 2020 Annual Report which includes both narrative and financial reports that describe the results achieved by the Foundation in the four main areas as follows:



✦ In order to reduce malnutrition, in 2020 the with support from UNICEF initiated the Community integrated with Mother Support Groups (MSG) in project is to improve household's sanitation free environment and reduce diarrhea and other health workers from 36 villages of 6 sub with the Ministry of Health (MoH) and Institute addition, during the year the SHIO villages in Aileu (1) and Liquica (2) support women's cancer, HALIKU– Program had initiated and trained 5 National Hospital on

Maternal and Child Health Program Led Total Sanitation project which Dili municipality. The objective of the which will lead to an open defecation diseases. The project also trained 37 municipalities in Dili in collaboration of National Health Science. In program expanded into 3 new municipality. In order to Women's Cancer Support physiotherapists at Dili management of Lymphedema while continue to raise awareness for the target groups on early detection and treatment of women's cancer as well as support and refer women's cancer patients.





✦ To increase access and quality of education in Timor-Leste, in 2020 the Alola Education program through its scholarship sub program supported 221 disadvantaged students from basic education to University level. In addition, the Alola Teacher Training sub program through Intensive Literacy Support as part of ALMA (Apoiur Lideransa liu husi Mentória no Aprendizajen) program in Lautem municipality continued to support teachers, especially Tetum literacy teachers in grades 1 and 2 in the first cycle of basic education. In addition, the Alola's Mobile Library Van visited 815 children within the communities in Dili as well as established 12 community reading centers in Manatuto municipality with the total 1,383 children registered. Similarly the Community-Based Preschools (CBPS) sub program in Viqueque and Ermera registered 3,251 students who enrolled in 104 preschools within the year.

✦ To strengthen women's economic participation during 2020, the Alola Economic Empowerment program focused on integrating activities for maximum impact, handcraft development, and preservation of cultural heritage. As a result, the program was chosen to lead the integrated project of Business and Social support for female Entrepreneurs in Timor-Leste (BEST) which was initiated in 2020 by the Grameen Foundation (USA). The project integrates women's economic empowerment activities with gender-based violence risk mitigation. The project engaged with other NGOs involved in women's economic empowerment projects, microfinance institutions (MFIs), legal and other support services for women who experience violence. In later December 2020, a two days Alola's Christmas Fair was held to provide a market opportunity to 63 artisan groups to showcase their products with the total income earned of USD 6,426.00.

✦ To promote women's rights and strengthen women's leadership, in 2020, The Alola Foundation through its Advocacy program with the support from WAVE/IWDA launched two new research reports about women's leadership: Public Perception of Women Leadership in Timor-Leste and Journeys of Women's Participation in Leadership. In addition, the program also supported 70 victims of gender based violence to access legal justice, shelter, counselling and providing humanitarian packages. During the year, the team continued to hold a dialogue between women potential candidates, and women parliamentarians (GMPTL) in Ainaro Municipality. Furthermore, the team disseminated information on Covid prevention using local languages through local community radio out in municipalities as well as distributed basic needs as a part of humanitarian assistance to 240 target households in 12 municipalities.

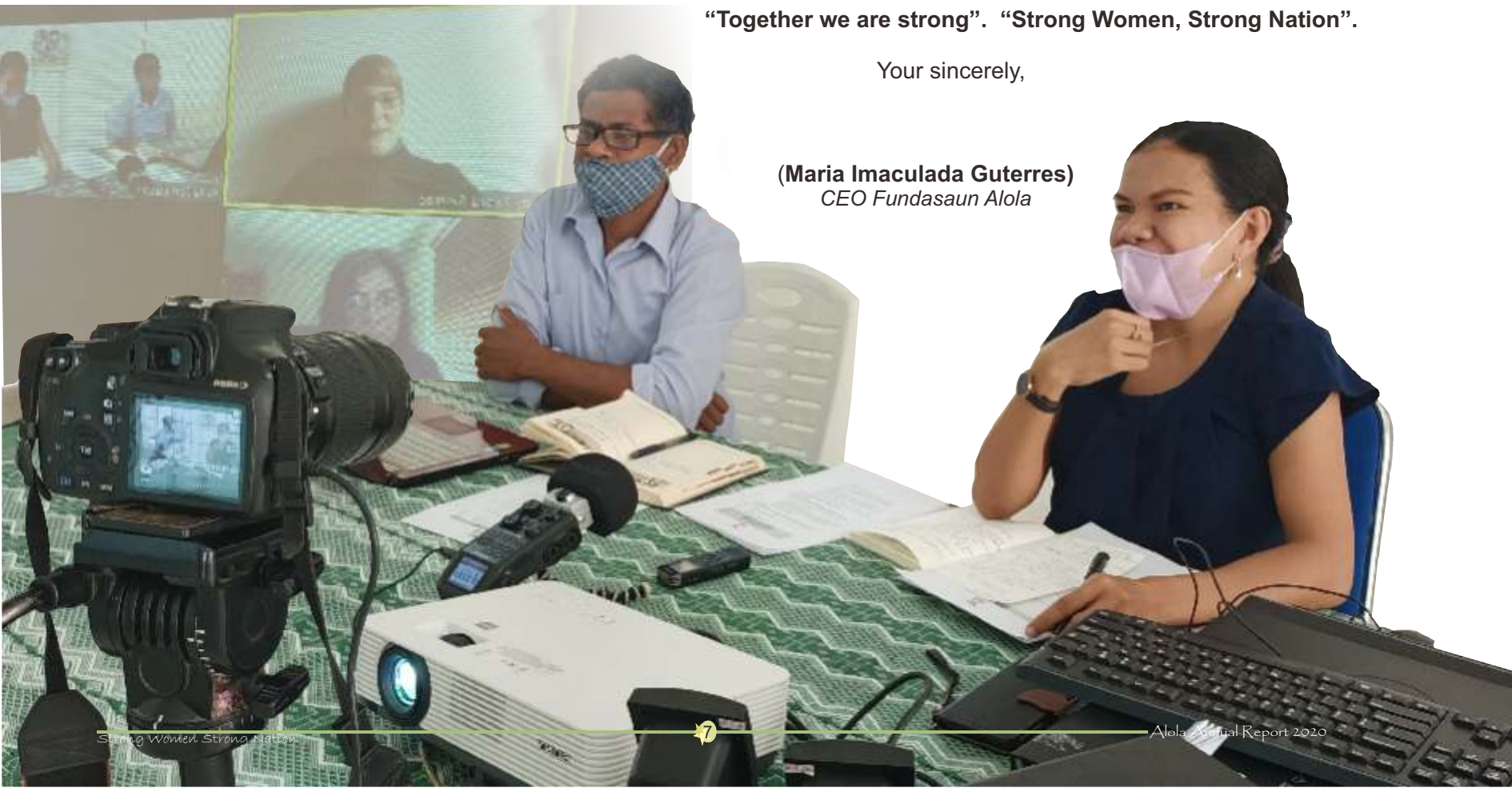
More details of the achievements made during the year are presented in this report. We realize that this progress would not have been possible without the support of our donors, partners/stakeholders and friends who have continued to support our work within the challenging year.

Finally, I would like to express my appreciation and gratitude to all of you who have supported us in implementing our mission. I also would like to thank the Alola Board members especially Mr. Silverio Pinto Baptista and Ms. Misliza Vital who retired from the Board in October 2020. My deep appreciation and thanks goes to Ms. Kirsty Sword Gusmão for all the support and encouragement she has given me during my first year of CEO in 2020. In addition, big thanks to managers, and all the staff who work together as a solid team to support each other in achieving our goals and objectives.

**“Together we are strong”. “Strong Women, Strong Nation”.**

Your sincerely,

**(Maria Imaculada Guterres)**  
*CEO Fundasaun Alola*







## MATERNAL AND CHILD HEALTH PROGRAM

The nutrition status of children under five in Timor-Leste is a significant public health challenge. According to the latest findings of the Timor-Leste Food and Nutrition Survey 2020, nearly a half of Timorese children under five (47.1%) are stunted (too short for their age), 8.6 % are wasted (are too thin for their height) and 32.1% are underweight (have a combination of stunting and wasting). While this is still alarming, there have been positive improvements since 2013 where the figures were 50.2%, 11% and 37.7% respectively.

However, breastfeeding rates are falling at the same time that Timor-Leste is experiencing increased availability and promotion of breast milk substitute products. The percentage of babies under 6 months who are not breastfeeding has increased from 2% to 7%, and the percentage of babies given a bottle with a nipple has increased from 7% to 18% (TLDH 2015-2016).

The Maternal and Child Health (MCH) program responded to these and new challenges. In 2020 challenges included the COVID19 pandemic threat, impact of lockdown and a new project to improve household sanitation in Dili to break the link between poor sanitation, diarrhea, and malnutrition. At the same time, the MCH program continued to mobilise local volunteers of Mother Support Groups (MSGs) and Suco Hadomi Inan no Oan (SHIOs) - Village Loves its Mothers and Children to promote maternal and child health, while Hau Hili Atu Kura (HALIKU - I choose to be healed) raised community awareness of the importance of early detection of breast cancer and supported patient referrals.



## COVID PREVENTION

The first threat of COVID-19 in Timor-Leste was in March 2020 when a person who had stayed in Liquica travelled to Portugal and tested positive for COVID-19 on arrival. The MCH team immediately began COVID-19 prevention activities in Liquica in coordination with the Municipal Health Service. The MCH team provided communities with masks and handwashing soap, delivered and installed water tanks at health centres in Liquica Villa and Maubara, and distributed soap and education materials about prevention behaviours to 15 isolated villages, reaching 2,965 households. In May and June, the team provided COVID-19 prevention education materials to 60 SHIO members (F: 36, M: 24) to distribute in their communities, and installed 2,868 tippy taps for handwashing in seven villages. In addition, 140 SHIO members in Alieu Municipality distributed COVID-19 prevention materials to households during home visits.



## REDUCING MALNUTRITION THROUGH IMPROVING HOUSEHOLD SANITATION AND BREASTFEEDING



Diarrhea is a major cause of malnutrition and death in children under 5 years. Children in households without access to a toilet and handwashing facilities are at high risk of stunting (TLFNS 2013). In 2020 with support from UNICEF, the MCH team began a project entitled “Community Led Total Sanitation (CLTS)”. The project is an important tool to improve health and nutrition by ensuring community members are free from Open Defecation thus diarrhea and other diseases will reduce.

The project is integrated directly into Mother Support (MSG) Program focusing in Dili municipality in order to improve household sanitation. The MSGs are important to change attitudes to sanitation and hygiene behaviours, and to support nutrition including breastfeeding because breast

milk provides the best protection for babies and infants against diarrhea and malnutrition. The project works in collaboration with Ministry of Health and Local Authorities by ensuring each local community builds or improves handwashing and toilet facilities, and connects toilets to a septic tank. The project is conducted step by step in each hamlet, village and administrative post. It supports the Government of Timor-Leste Community Action Plan for Sanitation and Hygiene for Dili municipality to achieve Open Defecation Free status because it was reported in the Timor-Leste's Household Census 2015 that 7% of total population in Dili municipality lacked a toilet.

## TRAINING HEALTH WORKERS AND MSGS



The MCH team collaborated with the National Institute for Health to organize a 4 day training event to increase health workers' knowledge about the government's sanitation plan, the role of MSGs, and how to disseminate key health messages to the community. Representatives from 37 health services in Dili municipality included doctors, midwives, nurses, nutritionists, and health promotion educators, who attended the training.

In 2020 the MCH team reestablished and retrained MSGs to function well again. Alola had initiated MSGs in Dili in 2016 till 2018, however by 2020 some groups were inactive. After the 2020 MCH activities, there were 540 active members in 36 MSG groups of 36 villages in Dili. Their presence and outreach activities reinforce the health messages provided by health workers. The health workers also have an action plan for the ongoing support of the Dili MSGs.

## RAISING COMMUNITY AWARENESS ABOUT HYGIENE

Community activities to celebrate World Handwashing Day (October) raised local awareness of the importance of handwashing because it is a small thing but has a big impact on health because it prevents various diseases including diarrhea and malnutrition. This activity was celebrated in all villages in Dili municipality with 1,279 participants (F: 982, M: 297). In addition, World Toilet Day (November) activities increased community awareness that toilets protect us from diseases and provide dignity. The activities also increased understanding that if a family does not build a toilet, this not only affects the family concerned but also the

WORLD HANDWASHING DAY	Number of Beneficiaries
	1,279
World Toilet Day	
	1,465









## INCREASING ACCESS TO SAFE BIRTHING: MATERNITY PACKS INITIATIVE



The Alola Maternity Packs provide clothing for babies and other necessities for mothers who have just given birth. Providing mothers with these fundamental necessities is an incentive to increase birthing in health facilities. During 2020, a total of 542 packs were distributed through health facilities in Aileu, Liquica, and the hospitals in Baucau and Maubisse.

## ROLE MODELS: EXPANDING MSG/SHIO GROUPS INTO NEW VILLAGES

The MCH team expanded the rural MSG and SHIO groups into 2 new villages in Liquica municipality and one new village in Aileu municipality. The team also continued to support the other existing MSGs/SHIOs in Baucau, Liquica, Dili, Aileu and Manufahi municipalities. A total of 33 MSG/SHIO groups provided activities to raise awareness and support infant and young child feeding and basic safe motherhood in their villages.

## HEALTH PROMOTION PACKAGE ACTIVITIES

During the year, the health promotion activity package led by the MSG/SHIO groups has shown that the rural MSG/SHIOs members provided counselling to 3,829 pregnant women and 2,744 lactating women, while in Dili the MSGs provided counselling to 1,024 pregnant women and 1,254 lactating women through community health centres, health posts and mobile clinics. As a part of the health promotion package, the MSGs in Dili and MSG/SHIOs in rural areas held activities such as community discussion in 59 villages with total 6,342 participants. Furthermore, the activities of cooking demonstrations using local indigenous food and safe motherhood film showings in Liquica and Aileu which led



by MSG/SHIO members reached the total beneficiaries of 11,778 people. In addition, World Breastfeeding Week celebrations were held in 58 villages in 3 municipalities reaching 4,234 community members. While a half day workshop on sexual and reproductive health for parents in Liquica was attended by 129 people.

## MINI WORKSHOP FOR PARENTS ON MATERNAL AND CHILD HEALTH

Workshops increased the knowledge of wives and husbands about reproductive health, family planning, safe birth, and good nutrition for mothers and children including breastfeeding. Participants were very enthusiastic in the discussion about important information to support pregnant and lactating mothers, and children. The workshops were held in 7 villages for 480 participants (F: 244, M: 236).

## MALE ENGAGEMENT

**MEN CARE TRAINING:** 152 people participated in training about the importance of nutrition in the family. Fathers, as well as mothers, need good nutrition information, so they can support each other to provide nutritious food for their children's development.



## FATHERS DISCUSSION:

This discussion aims to increase fathers' participation in their families' health through knowledge and increased understanding. Fathers increased their knowledge about mothers' condition when they are pregnant, give birth and are breastfeeding. Through discussion, fathers shared their experience in supporting their wife and children. During the year, a total of 367 fathers participated in these discussions.



## INCREASING YOUNG PEOPLE'S HEALTH KNOWLEDGE

### PEER EDUCATORS TRAINING IN VILLAGE

In September, the MCH team coordinated with Liquica municipality health services to provide sexual and reproductive health training for youth. This was the third phase for peer educators who first trained in 2018. A doctor from the health post delivered training to increase peer educators' knowledge on reproductive health so that they can share their skills with other youths in their villages. 36 participants (F:21, M: 15) attended from 8 villages.

### YOUTH PEER SHARING SESSION

The peer educators in Liquica then conducted Peer to Peer Sharing Sessions to increase youth knowledge on reproductive health. In total, 461 youth attended (149 new and 312 previous participants). Feedback indicated that participants were very happy because they gained information on reproductive health in order to understand their body, how diseases can be transmitted, and the risks of teen pregnancy to the mother and baby. In addition, MCH team distributed Education materials so youth and SHIO members could share this information with their communities.

## ACHIEVEMENTS IN WOMEN'S CANCER PROGRAM

During 2020 HALIKU “Hau Hili Atu Kura” I choose to be healed, a project to support cancer patients, conducted workshops and awareness raising activities about breast cancer and cervical cancer throughout the community. HALIKU collaborates with the Ministry of Health through National Breast Cancer Committee based at the National Hospital in Dili.

In January HALIKU organized a specialist in Lymphedema (Jill Griffiths from Australia) to provide two days of training on Linfedema managemnet for five health professional of physiotherapist at Dili National Hospital. Jill also shared her expertise about making Compression Garments for women with breast cancer, with the Alola Esperansa Production Centre staff. To continue the dissemination of breast cancer information to the community, HALIKU with the National Breast Cancer Committee provided mini-workshops for University students and youth groups







to raise awareness about what is breast cancer and cervical cancer, risk factors of breast cancer, symptoms, how to prevent breast cancer, and a film show. In addition, a representative of the National Breast Cancer Committee provided information about breast cancer treatments (surgery, radiation therapy, chemotherapy, and hormone therapy). These activities were attended by 93 students (F: 62, M: 31).

Furthermore, HALIKU raised awareness of women's cancers at secondary schools in Liquisa municipality (5), Viqueque municipality (1), and Aileu municipality (1). In addition, HALIKU

hold an event on Pink October as breast cancer awareness month, which was celebrated in the Xanana Reading Room in Dili, with Rede Feto women's network, AGAPE Church members, and with secondary schools (4) in Baucau municipality.

On International Women's Day, the HALIKU's team celebrated with women prisoners in Gleno, Ermera municipality, to raising awareness about breast and cervical cancer, breast cancer prevention, detection of symptoms or signs of breast cancer, and how it is treated.



HALIKU also maintained its role in raising awareness for youth on nutrition, sexual and reproductive health, and women's cancers for 2 villages in Aileu municipality. This activity was attended by 30 participants (F: 14, M: 16).

The HALIKU project team referred 29 women to the national hospital in Dili, and visited, accompanied or provided other direct support to 38 women during 2020.







# EDUCATION PROGRAM

## Overview of Education Program in 2020

The objective of the education program is to increase access and quality of education in Timor-Leste. The education program of Fundasaun Alola is to support teachers, students, children and communities to access and gain skills and knowledge to fulfill their personal goals. This annual report covers the achievements of implementation of the 4 education projects in Fundasaun Alola during 2020.

The 4 projects in Alola education program are: In-Country Scholarship, Teachers Training, Mobile Library and Community-Based Preschools.

During the year, the education program continued to work with key partner the Ministry of Education, Youths and Sports (MoEYS) and collaborated with other educational organizations and institutions. Children and students, schools and teachers are continually benefiting from the program implementations.



The achievements of the 4 Alola Education projects implemented in 2020 are as follows:

## In-Country Scholarship Project

The in-country scholarship project in Alola is to support disadvantaged students from basic education to University in Timor-Leste. In 2020, the project administered and supported students to access to education in primary, high school, university and also technical vocational school.

This year, scholarships were funded by 20 international donors ranging from agencies, companies, friendship committees and individual donors. 221 students (147 males and 74 females) were awarded scholarships. 7 out of 221 students (6 females and 1 male) have graduated from different universities in Timor-Leste with high results. The scholarship covers their school tuition fees and living allowance.



9 female students were supported by Partnership for Human Development (PHD) to continue their study in universities in Dili. 3 out of 9 students graduated this year with high results while 6 students are towards the end of their study and waiting for graduation next year.



To better assist the students' learning process the team distributed 12 laptops to university students (6 males and 6 females) that currently study at universities in Dili. The laptops were provided by Friends of Lacluta and Bendigo Maubisse Friendship Committee.

The team held regular communication with the awardees to follow up their learning progress and challenges that they encounter during their study. The team also visited the municipalities to meet with the students' parents and discussed their children's learning progress especially toward their final year study and how they support their children during their study.



## Teacher Training Project

To support MoEYS to implement the new curriculum in basic education, Alola teacher training team carried out an Intensive Literacy Support Program (ILSP) in Lautem municipality as part of ALMA (Apoi Lideransa liu husi Mentória no Aprendizazen) program. The objective of ILSP is to support teachers, especially Tetum literacy teachers in grades 1 and 2 in the first cycle of basic education, and to encourage the target schools to use story books and reactivate their school library and their classroom for students to access.



Alola ILSP team conducted classroom observation of Tetum literacy classes. After classroom observation, the team provided mentoring and feedback to teachers based on their teaching abilities in regard to the newly designed lesson plans and curriculum developed by MoEYS.

This year, the team conducted the ILSP in

Lautem municipality in 4 administrative posts (Luro, Lautem, Lospalos and Tutuala) to 2 school centers which covered 10 ALMA schools with the total of 23 teachers. For every teacher, their classes were observed by the team at least 2 times per month. Please refer to the following table for details:

Aside from observing Tetum literacy classes, in 2020 the teacher training team also worked with school leaders e.g. school coordinators, vice coordinators and teachers in Lautem municipality to reorganize and reactivate the library that was not effectively accessed by students based on the designed lesson plans in the new curriculum.

The schools that were supported by Alola Teacher Training team to reorganize and reactivate their school libraries are EBC 1, 2, 3 Odofuru, EBF 1, 2 Pairara, EBF 1, 2 Malahara, EBF 1 Teno, EBF 1, 2, 3 Laikara.

No	School	Teacher		
		Female	Male	Total
1	EBC 1,2,3 Odofuno	0	2	2
2	EBF 1,2,3 Laikara	1	1	2
3	EBF 1,2 Nu 1 Lospalos	4	1	5
4	EBC 1,2,3 Leusari	0	2	1
5	EBF 1 Teno	2	0	2
6	EBF 1,2 Pairara	1	1	2
7	EBF 1,2 Titilari	0	1	1
8	EBF 1,2 Mehara	1	2	3
9	EBF 1,2 Chai	2	1	3
10	EBF Malahara	1	1	2
Total				23

There was no existing school library due to lack of facilities in other 10 schools not listed above, but the team supported them to create a mini-library in their classrooms. The team also assisted the teachers and students during library time to access libraries and mini-libraries based on lesson plans.

The Teacher Training team also administered 32 local mentors' allowance from phase 1 to 4, but for phase 6 in Covalima municipality Alola administered both monthly allowance and salaries of the local mentors.

10 municipalities that have implemented ALMA program are Aileu, Dili, Manatuto, Liquiça, Bobonaro, Baucau, Viqueque, Lautem, Manufahi and Covalima. 2 out of 10 municipalities (Covalima and Lautem) have covered 100% schools and 8 municipalities only covered 50% of ALMA program.

## Mobile Library Project

To provide reading resources with entertaining activities close to children, Alola's Mobile Library team visited some communities in Dili and established community reading centers in Manatuto municipality.



In Dili, with support from Alola Australia, 815 children (406 boys & 409 girls) from grade I to III of primary schools in five different communities (Manleuana, Beduku, Fomentu, Casnafar and Camea) accessed to Alola Mobile Library van with reading resources. Each community was visited by the team once a week for 2 hours, usually in the afternoon. During the reading sessions children were assisted by the team to practice different types of reading strategies, quizzes and fun activities.

The project was implemented through coordination with MoEYS, community leaders, parents and teachers. This collaboration enabled the team to identify the children in those five communities to participate in Mobile Library activities in Dili and engage with parents to encourage children to access to reading sessions when the van visited their communities in Dili.







In addition, to improve early grade students' reading abilities in Manatuto municipality, Alola's Mobile Library team was supported by ChildFund to establish 12 community reading centers with 6 branches in 3 administrative posts in Manatuto (Manatuto town, Laclubar and Lacro). Reading sessions were held in the afternoon after school for two hours and children were assisted by parent and peer tutors.

Before children accessed the reading sessions, the registered children undertook pre-tests administered by Mobile Library team. The team registered 1,383 children (768 boys & 615 girls) from grade I to III of the primary school, including two boys with physical disabilities. Due to COVID-19 restrictions where classes were split up, only 1,122 children (608 boys & 514 girls) were able to attend the pre-test. 622 children (362 boys & 260 girls) were considered as project beneficiaries in this financial year as their pre-test result scored less than 65%. The project will be finished next year, hence post-test result will be available by June 2021.

To facilitate the reading session to children in the established centers and sub-centers, 58 parent tutors (M: 12 & F: 46) and 118 peer tutors (M: 35 & F: 83) were identified and trained by the Mobile Library team. The training was focused on reading facilitation skills, understanding child abuse, child safeguarding and Prevention of Sexual Exploitation, Assault and Harassment (PSEAH); and COVID-19 prevention. Tutors' knowledge increased on the focused areas of the training, as their knowledge was assessed before and after the training.

## Community-Based Preschools Project

Alola's education program established Community-Based Preschools (CBPS) in 2016 for children aged 3-5 in remote areas of Ermera and Viqueque municipalities. The preschools are community home-based (37 centers) and center-based (67 centers) which operate in 7 administrative posts in both municipalities (Ermera: Railaco, Gleno, Letefoho, Atsabe & Hatulia; & Viqueque: Uatulari & Ossu).







Number of beneficiaries (children)	
Women	1,690
Men	1,561
<b>TOTAL</b>	<b>3,251</b>

This year, 3251 students (1690 boys & 1561 girls) enrolled in 104 preschools in both municipalities. The students were facilitated by 199 trained facilitators and students attended classroom learning for 9 hours in average per week. The facilitators are trained and committed to provide play-based learning environment that boost students' potentials to succeed, and supports the development of positive natures of creativity, problem solving and independence.

CBPS project is supported by New Zealand Embassy through UNICEF Timor-Leste. Each CBPS has been established in collaboration with a School Management Committee (SMC), facilitators, parents and community leaders. A total of 150 SMC members (89 members from Ermera & 61 members from Viqueque) were trained on strengthen the community-based groups and school

management committee to support and manage preschool centers.

To develop standard preschool infrastructure, Alola continued collaborating with UNICEF to construct 4 preschool buildings last year through community mobilization under UNICEF's construction consultant and Alola Field Officers to monitor the effectiveness and quality of work. 2 preschool buildings in Ermera (Biliubu and Titibuti) and 2 buildings in Viqueque (Nahareka and Uaica) have achieved over 75% and are expected to be finalized by early 2021. Additionally, through this collaboration we have supported the communities to finalize 10 out of 13 outdoor play areas (7 in Ermera and 6 in Viqueque).

#### Community-Based Preschool Data 2020:

Municipality	Schools		Registered Students		Students T L-UKG		Graduated Students		Facilitators	
	HB	CB	M	F	M	F	M	F	M	F
Ermera	21	37	1049	960	753	648	296	312	31	80
Viqueque	16	30	641	601	416	342	225	259	13	75
<b>Total</b>	<b>104</b>		<b>3251</b>		<b>2159</b>		<b>1092</b>		<b>199</b>	

HB: Home-Based

CB: Center-Based

T L-UKG: Transition from Lower Kindergarten to Upper Kindergarten

For 2021, CBPS will focus on follow up training to facilitators on the teaching and learning process and conduct parenting education training to parents. In addition, Alola will collaborate with UNICEF to develop strong relationship between the CBPSs and MoEYS for sustainability.

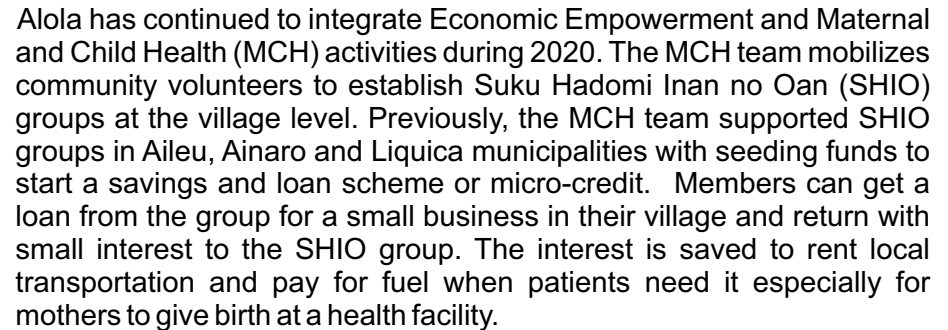




# ECONOMIC EMPOWERMENT PROGRAM

**A**lola's Economic Empowerment Program aims to strengthen women's economic participation in order to improve the status of women, increase income generating opportunities and to promote economic independence. During 2020, projects focused on integrating activities for maximum impact, handcraft development, and preservation of cultural heritage. Following are the project achievements details:

## Increasing Microcredit For Livelihoods, And Sustaining Community-led Support For Isolated Mothers And Babies



The Economic Empowerment team provided support and mentoring for fifteen SHIO groups continuing savings and loans schemes. Monitoring with SHIO members and local leaders reported that micro-credit activities helped improve people's lives and the average income has increased by 20% per group.

Another integrated project is the Business and Social support for female Entrepreneurs in Timor-Leste (BEST) initiated in 2020 by Grameen Foundation (USA). Alola's Economic Empowerment program was the project coordinator within Timor-Leste, engaging with other NGOs involved in women's economic empowerment projects, microfinance institutions (MFIs), and legal and other support services for women who experience violence.

The project integrates women's economic empowerment activities with gender-based violence risk mitigation. This responds to the combined social, economic, and regulatory challenges which prevent women entrepreneurs from starting, maintaining, and expanding successful businesses.





Due to COVID-19 pandemic and the State of Emergency, public activities were prohibited from March 2020. The project communication continued via skype meetings, conference calls and text messages, but public activities had to be postponed. In July, Alola Foundation with the support of Grameen Foundation consultant in Timor Leste, conducted focus group discussions and interviews in Maliana, Covalima and Dili municipalities to identify the barriers faced by female entrepreneurs to accessing finance, business development services and GBV and other social support. Participants included women and men, women entrepreneurs, women's business associations, MFIs, and support services for gender based violence. In October the Economic Empowerment team negotiated a linkage plan to connect local services to respond together to women entrepreneurs needs.

Alola Foundation and MFI Moris Rasik conducted a day pilot training on business education, financial literacy, loan discipline and especial loan for 27 women entrepreneurs in Liquica. The BEST project team also provided training on gender and power dynamics and linkage plan workshop for two days in Dili, attended by 18 representatives from Alola and other NGOs as well as two MFIs in December 2020. This project continues in 2021.



## Preserving The Original Cultural Identity Of Timor-Leste And Supporting Women's Livelihoods

This project empowered marginalised women to contribute economically and culturally to the wellbeing of their families, communities and nation, while they prepare to share the cultural resources of Timor-Leste with international tourists. The project aimed to protect and preserve Timorese cultural heritage by developing the supply for the international tourist market of high quality tais as a product which symbolizes the cultural heritage of Timor-Leste. The three main activities were; first; women practising product quality improvement of traditional woven tais; second product development and diversification; and third business skills training. 50 weaver representatives, young and old, from five weaving groups in Dili, participated in the project. With the support of USAID Tourism for All, Alola Foundation was able to provide the five groups with equipment such as a sewing

machine, an overlocker machine and other materials so that the groups are set up to develop their tourism products at home and to improve their economic situations.

## Rural Artisan Women Improve Their Production Of Handcrafts And Access Markets.

This project improves the livelihoods of rural women through the development of the handcrafts industry. In 2020, the Alola Foundation made significant efforts to improve the living standards of women in remote areas through economic empowerment programs. This initiative was to maximize women's participation in economic opportunities and gain benefits. During the year, the COVID-19 pandemic has hampered tourist visits to Timor-Leste and affected an economic collapse across the country.



However, the Alola Foundation continued to strive to achieve several activities under this project including in December, a one-day workshop and then the weekend market - Alola Christmas Fair. As usual, in early December before Fair, the Economic Empowerment team hosted a one-day workshop in Dili to equip new market participants with information about product quality improvement and business skills. On this occasion, Alola Foundation invited NGO Mercy Corps to share their knowledge about plastic recycling so that participants could gain new ideas and skills to diversity their products. The Economic Empowerment team provided information about how to offer quality products to customers, customer service, and the presentation of stall and booth displays. The workshop was attended by 17 women artisans from Oe-cusse, and Bobonaro, Covalima and Lospalos municipalities.

The weekend Christmas Fair provided a market opportunity to 63 artisan groups from 11 municipalities to showcase their products. The beneficiaries (estimated at 1,260) shared income earned during the two-day market of USD 6,426.00. The market provided mutual benefits for both artisan and buyers to interact with each other regarding the production process, learn cultural values and selling items. The products showcased were varied such





as tais, scarves, ceramics, dolls, wood carvings, items from recycled plastic, women's accessories, local soaps, virgin coconut oil, traditional herbs, local coffee and food.

## Weavers Networking—Sharing Strategies For Empowerment, Ownership And Leadership

This joint project by Timor Aid and Alola (TAFE) created a women weavers' network in each of two new municipalities; Lautem and Bobonaro. These networks raise the voices of weavers, and facilitate capacity building opportunities and access to new markets.

The two new networks add to previously created networks in Covalima and Oecusse, also developed through the collaboration of UN Women and TAFE. This follows recommendations from the National Tais Workshop led by Secretary of State for Art and Culture (SEAC) in April 2019, and the research of UN Women's consultant in 2017.

During 2020 the TAFE team worked with the four networks to identify and support weavers' training needs. The weavers benefitted from advocacy, capacity building on leadership skills, tais quality improvement and product diversification training. 100 women, including young women, benefitted from the activities which empower women and sustain Timorese weaving tradition.



# ADVOCACY PROGRAM

In 2020, Fundasaun Alola's Advocacy program was focused on Strengthening Women's Voice and Empowerment. In related to this, as a response to COVID-19 and the State of Emergency lockdown from March 2020, Fundasaun Alola advocated to government and decision makers to ensure women and other vulnerable groups were factored into budget and economic recovery decisions, to protect victims of gender-based violence, and on other emerging issues.



The success of an advocacy requires a long-term commitment and related to this, after 8 years Alola's advocacy efforts for the Re-Entry Policy (REP) for girls in school after childbirth have been realized because within this year the Ministry of Education prepared a Re-Entry Policy that will allow young women who leave school due to pregnancy to return to complete their education. This issue was initially raised by young women activists in 2013 through the group Young Women Making Changes supported by Alola, who were very worried about the education conditions of young women who had to drop out of school because they were pregnant and had no chance to return to school.

Another long term commitment will also be realized when the government's anti-trafficking commission (KLATU) is established, after it was approved by the Council of Ministers in 2020. This is an important part of implementing the Law Against Human Trafficking, which was adopted in 2017.

In addition, this year, Alola monitored the implementation of the Maubessi Declaration in the Health Sector, at the request of Rede Feto. The recommendations were submitted to the Ministry of Health.



Furthermore, on this year, Alola launched two new research reports about Women's Leadership: [Public Perception of Women Leadership in Timor-Leste](#) (available in [English and Tetun](#)) and [Journeys of Women's Participation in Leadership](#). The reports were launched during Alola Annual General Meeting which was accompanied by a photo exhibition of women leaders that represents their diversity of leadership roles, faith, age and sexuality.

Finally, at the end on the year, Alola's staff also contributed to the end-line evaluation for 5 years WAVE project implementation in Timor-Leste as an additional activity within the year.

Below Are The Activities And Achievements Of Advocacy Sub Programs Of Fundasaun Alola.

## WOMEN'S RESOURCE CENTRE (WRC)

At the national level, the Women's Resource Centre continued to provide opportunities for young women and men to access free computers, internet and library; conducted monthly discussions on gender issues (such as gender based violence, reproductive health, human trafficking, CEDAW Convention, and Gender-Responsive Budgeting); provided training on leadership and public speaking; and promoted life skills such as Curriculum Vitae (CV) writing, scholarship opportunities, prevention of early pregnancy, and risks of drugs and alcohol.





Total beneficiaries reached by the Women's Resources Center in 2020 was 2,316 people (F: 1394 and M: 922). These were students, teachers, members of village councils, local authorities, partners and vulnerable groups. It supported 70 victims of gender based violence to access legal justice, shelter, counselling or humanitarian packages, or a combination of these.

In addition, within this year the WRC also led regular meetings of the Advocacy Working Group that focuses on gender based violence. The group represents civil society organizations working for human rights and government representatives.



Furthermore, in response to increasing social media reports of cases of infanticide in Capital Dili, the Advocacy Working Group examined the issue. The WRC prepared a statement for the prevention of infanticide and incest (recognizing that incest is one of the causes of concealed pregnancy and infanticide, to protect the perpetrator). This was presented to the President Authority of Dili Municipality, 6 Administrators of Administrative Posts and 32 villages chiefs. This action strengthened Alola's cooperation with partners at the national and municipal level, especially with male leaders promote to gender equality at the local level. Following this, the women parliamentarian's group (Grupo das Mulheres Parlamentares de Timor-Leste (GMPTL)) prepared laws to respond to increasing cases of infanticide.

Number of Beneficiaries	
WOMEN'S RESOURCE CENTER	
 Women	1394
 Men	922
TOTAL	2316



## Success Story

The Community Youth Movement (Movimentu Foinsa'e Komunitade) identified a 13 years old victim of sexual violence (incest) early in 2020 in Manatuto Municipality. The group acted immediately, however the victim herself didn't want to speak because she was being threatened by the suspect. The representative of the group continued to offer support, but the family never intervened and they also threatened the child. So the group alerted the PNTL-Vulnerable Persons' Unit (VPU)

to the situation, and Alola provided assistance to the child and informed VPU of a shelter in Dili, where the police took her. The victim is safe and she has given birth to a girl. Alola continues monitoring her situation and the suspect is still in the formal justice process.



## DISTRICT SUPPORT PROJECT

An important achievement for Timor-Leste in 2020 was the prevention of community transmission of COVID-19. Alola Field Officers in each municipality translated published statements into the local language so that all communities could quickly understand actions for prevention. Furthermore the District Support Project provided humanitarian packages to the 240 vulnerable families at 24 villages in 12 municipalities, including widows, women abandoned by their husbands, people with disabilities, elderly people and the poor families.

In addition, to strengthen the voice of women in rural areas, the District Support Project conducted Citizens Forums in 24 villages in 12 municipalities as well as RAEOA (Oecussi). The Citizens Forums were conducted by potential women candidates for municipal election, supported by the Alola municipality Field Officers. This is an important activity and is unique in Timor-Leste. The activity provides an opportunity for local communities to raise local problems and the potential candidate to advocate for solutions to the relevant authorities and institutions. Problems related to education, health,





agriculture, economy, electricity, roads and violence. In each municipality, the potential candidate participated in a community radio talk show to discuss the result.

Furthermore, dialogue between women potential candidates, and Women Parliamentarians (GMPTL) that began during activities in 2019, continued during 2020 because both groups of women found it valuable.

Moreover, in Hatubiliko, Ainaro municipality, women from 5 local groups were trained in leadership and nutrition based on local agricultural products within the year. The groups also received subsidies to open businesses (restaurant and kiosk), and started a savings and loans group for members.

In total 2,622 (F: 2213 & M: 409) beneficiaries reached by the District Support Project within the year consisted of partners, local authorities, members of suku councils, women potential candidates, women's associations, vulnerable groups and victims of gender based violence.

Number of Beneficiaries District Support Project	
 Women	2213
 Men	409
<b>TOTAL</b>	<b>2,622</b>

## Success History



From Filomena do Santos  
Hamlet chief from Leopa, Dato village of Liquica Municipality.  
Status: mother of 5 children, divorced  
Period elected: 2016-2023.

I have been involved in political life since 2013. At the beginning I was active in activities like Alola Leadership Training and Rede Feto activities, and also social activities in Liquica and Leopa Village. I always learnt from other women, like if they speak in public, I always observed them and I hoped that one day I would speak in public. I led informal meetings and read magazines because I think its very difficult to compete with men, therefore I needed to increase my capacity and experiences. These experiences motivated me to compete in the 2016 Local Election and I was very proud to be elected as hamlet chief. After the election, I started working to design plans together with members of the village



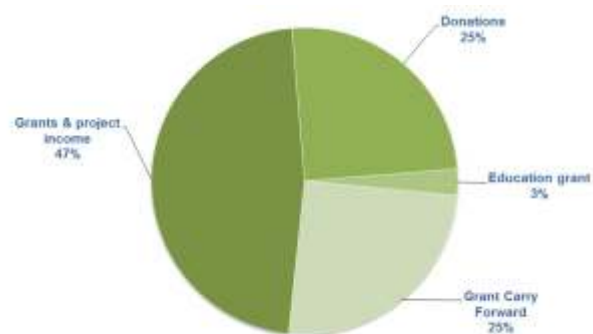
council and we made women's and children's issues a priority. Through the village council meetings, I had the opportunity to participate in decision making. "I am very happy that my dream came true". But throughout the journey of my career, I had to look for a solution because my husband never supported my career and told me to stop working. We had a meeting with the family but there was no solution found. So I discussed this with my children and they said that it depended on my feeling. I decided to get divorced. Now I am still working and take good care of my children. I am very happy too because I am getting support from my children and colleagues.



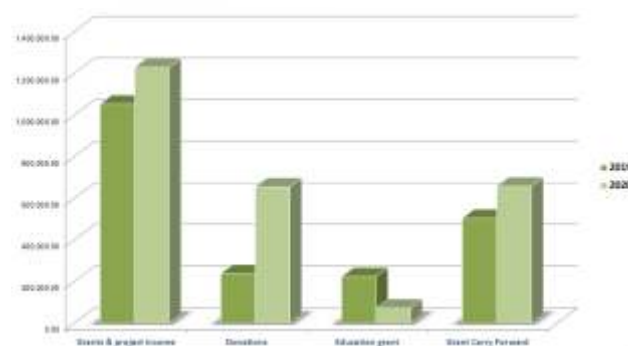
# FINANCIAL STATEMENT OF ALOLA

## INCOME STATEMENT FOR THE YEAR ENDED 31 DECEMBER 2020

	Note	2019	2020
		\$	\$
Revenue	2	1,392,400.73	1,810,530.60
Other revenue		256,032.92	258,016.63
Administration expenses		- 621,743.97	- 579,013.19
Project costs		-1,009,080.38	- 1,278,640.67
Surplus/(deficit) after income tax		17,609.30	210,893.37
Note 2: Revenue			
<b><u>Revenue from Government and Other Grants</u></b>			
Grants & project income		1,243,059.83	1,229,546.88
Donations		305,404.73	655,083.54
Education grant		46,231.61	72,685.24
Other income			
Carry Forward from Prior Year		455,614.42	657,909.86
Carry Forward to Next Year		- 657,909.86	- 804,694.92
		<b><u>1,392,400.73</u></b>	<b><u>1,810,530.60</u></b>
<b><u>Other Revenue</u></b>			
Sales		0	0
		<b><u>1,392,400.73</u></b>	<b><u>1,810,530.60</u></b>



Note 2 : Revenue 2019-2020





## BALANCE SHEET AS AT 31 DECEMBER 2020

	2019	2020
	\$	\$
<b>ASSETS</b>		
<u><b>CURRENT ASSETS</b></u>		
Cash and cash equivalents	1,013,917.91	919,731.88
Operational advances		
Trade and other receivables	13,949.01	273,756.75
<b>TOTAL CURRENT ASSETS</b>	<b>1,027,866.92</b>	<b>1,193,488.63</b>
<u><b>NON-CURRENT ASSETS</b></u>		
Property, plant and equipment	99,900.55	297,998.35
<b>TOTAL NON-CURRENT ASSETS</b>	<b>99,900.55</b>	<b>297,998.35</b>
<b>TOTAL ASSETS</b>	<b>1,127,767.47</b>	<b>1,491,486.98</b>
<b>CURRENT LIABILITIES</b>		
Trade and other payables	674,379.55	824,952.00
Employee provisions	35,495.35	37,749.04
<b>TOTAL CURRENT LIABILITIES</b>	<b>709,874.90</b>	<b>862,701.04</b>
<u><b>TOTAL NON-CURRENT LIABILITIES</b></u>		
<b>TOTAL LIABILITIES</b>	<b>709,874.90</b>	<b>862,701.04</b>
<b>NET ASSETS</b>	<b>417,892.57</b>	<b>628,785.94</b>
<u><b>EQUITY</b></u>		
Funds available for future use	417,892.57	628,785.94
<b>TOTAL EQUITY</b>	<b>417,892.57</b>	<b>628,785.94</b>

# SUMMARISED INDEPENDENT AUDITOR'S REPORT

TO THE MEMBERS OF FUNDASAUN ALOLA

We have audited the financial statements of Fundasaun Alola, which comprise the balance sheet as at December 31, 2020 and the profit and loss statement for the year then ended.

## **Management's Responsibility for the Financial Statements**

The Management of Fundasaun Alola is responsible for the preparation and fair presentation of these financial statements in accordance with International Financial Reporting Standards ("IFRS"). This responsibility includes: designing, implementing and maintaining internal control relevant to the preparation and fair presentation of financial statements that are free from material misstatement, whether due to fraud or error; selecting and applying appropriate accounting policies; and making accounting estimates that are reasonable in the circumstances.

## **Auditor's Responsibility**

Our responsibility is to express an opinion on these annual financial statements based on our audit. We conducted our audit in accordance with International Standards on Auditing. Those standards require that we plan and perform the audit to obtain reasonable assurance as to whether the financial statements are free of material misstatement.

Our audit procedures included examination, on a test basis, of evidence supporting the amounts and other disclosures in the financial statements, the evaluation of the appropriateness of accounting policies used and the reasonableness of accounting estimates made by management, as well as evaluating the overall presentation of the financial statements. We believe that audit evidence obtained is sufficient and appropriate to provides a basis for our opinion.

## **Auditors Opinion**

In my opinion, the financial statements present fairly, in all material respects, the financial position of Fundasaun Alola as at December 31, 2020 and of its financial performance for the year then ended.

**Name of Firm: LEAO Unipessoal Lda.**



**Moises Maria do Rego Leao. MBA**

Registered Accountant No. 14125

Palapaso, Dili, Timor-Leste

Data: February 25, 2021





## ALOLA FOUNDATION BOARD OF DIRECTORS 2020

**Ms. Dr. KIRSTY SWORD GUSMÃO AO (Chair)**

*Former First Lady of Timor-Leste; Founder and Chair of Alola Foundation, Founder of Dili Institute of Technology (DIT), Founder of Xanana Gusmao Reading Room (XGRR), President of the Advisory Committee of the National Director of Linguistics, Andrew McNaughton Trust, Patron of the Blair Forster Memorial Trust, and Goodwill Ambassador for Education, Timor-Leste,*

**Ms. CEDELIZA FARIA DOS SANTOS** - *Former General Secretary of National Parliament Timor-Leste, former Executive Secretary and Head of Administration and Finance Department of UNESCO*

**Ms. ANTONIA CARMEN DA CRUZ** - *National Director of Social Services, Ministry of Social Services*

**Ms. MARIA GOROMALI BARRETO** - *Member of National Parliament, Former Child Right Commissioner of Timor Leste, Former Director of NGO FOKUPERS.*

**Ms. MARIA DOMINGAS ALVES** - *Commissioner of Civil Service, President of Timor-Leste Special Olympic, Former Ministry of Social Solidarity of Timor-Leste and Founder of women's organization, FOKUPERS.*

**Ms. ZEENAT AWAN ALUWIHARA** - *Business women and Director of East Timor Trading*

**Ms. BÁRBARA NAZARETH DE OLIVEIRA** - *Lawyer at Jurídico Social (JU,S)*

**Ms. DIRCE MARIA SOARES** - *Former head of Nutrition Department of MoH, Director of INS-MoH*



### **CHIEF EXECUTIVE OFFICER**

Maria Imaculada Guterres

### **PROGRAM MANAGER**

Adalziza Dias Ximenes  
Cristina Santos Martins  
Ema Freitas de Sousa (Jan - Aug 2020)  
Agueda C. Freitas (Aug-Sept 2020)  
Jacob R.F. de Sousa (Oct- Dec 2020)  
Jose Sabino Ximenes  
Maria Evelina Iman  
Jesuina Maria Boavida Ximenes

### **MCH PROGRAM**

Adalgisa Menezes  
Albertina de Rosa  
Alberto Brites  
Amelia Amaral  
Beatris Ximenes  
Baptista Camanhas  
Celestina F. de Oliveira

Gina Maria Santa  
Joao Hornay  
Jaquelina Sarmiento  
Jasinta Nene Saleh Alkatiri de A.  
Justina Pereira  
Ligia Madeira F. S. M Belo  
Liliana Pires  
Livia Tavares  
Lizetti Moura  
Luiza Meluiza  
Mafalda da Cruz  
Moises da Silva  
Neneng Alkatiri  
Pasquela Soares  
Pascoela Barreto

### **EDUCATION PROGRAM**

Abilio Luciano Guterres (Jan-Oct 2020)  
Abrao Jose de Jesus  
Agusto da Cruz  
Aquilminio da Silva

Carlos Sarmiento  
Carmelita Do Rego  
Dulce pereira Lopes  
Elio Mascarenhas (Jan. – Oct 2020)  
Fortunato de Deus  
Hernanio da Cruz  
Henriques Obe  
Joanina Candida  
Joanita de Oliveira  
Joanina da Silva Pires  
Juliana Barreto  
Joao da Costa  
Lucena Allen  
Marcal Ramos Gomes  
Maria da Rosa  
Nuni M. Nobre  
Romeo Ximenes  
Rosita dos Santos  
Sofia Camoes Pereira (Jan-Oct 2020)  
Triponio Verdial  
Venezuela de Sousa





### **ADVOCACY PROGRAM**

Apolonia Maria da Costa  
 Agustinha Fraga  
 Bendita Maria Jose  
 Bendita Mendonca Barreto  
 Cristalina de Jesus P. Guterres  
 Georgina da Costa Ximenes  
 Francisco Guterres  
 Joana dos Santos  
 Joanina da Costa  
 Jacinta da Cruz  
 Josefina Q. Pereira  
 Juventina Sequeira  
 Luciana Guterres  
 Maria do R. da Silva Monteiro  
 Marquelina Pereira.  
 Manuela Soares Brites  
 Paulina Asis Belo

### **ECONOMIC EMP. PROG.**

Ilda Maria da Cruz  
 Mario Barreto  
 Maria Lurdes G Ferreira

### **MEDIA**

Fransiskus Xaverius S.

### **HUMAN RESOURCE**

Elisita Roserio

### **FINANCE**

Julio Hornay  
 Rosalina Olo

### **OFFICE SUPPORT**

Abrao L.Fraga (Jan-Sept 2020)  
 Adelio Batu Mali  
 Alfonso Ama Boko  
 Bernardino Guterres S. Vieira  
 Celestina de Oliveira Sousa  
 Domingas Varela  
 Domingos Marques  
 Domingos da Silva  
 Eugenio Mesquita  
 Filomena Paicheco  
 Geronimo Gama  
 Helena Vieira

Henrique Hornay  
 Imanuel Skera  
 Isabela Boavida Coelho  
 Margarida Sarmento  
 Marito Gomes Lopes  
 Manuel Sarmento  
 Joao Bosco  
 Juliana de Carvalho  
 Luis Espirito Santo da Costa  
 Pascoal Martins  
 Paulino Ximenes  
 Paulo de Jesus Carvalho  
 Paulo Rosario (Jan-Sept 2020)  
 Thomas Maria Belo (Jan-Sept 2020)

## DONORS LIST IN 2020

## THANK YOU

*On behalf of the women of Timor-Leste, we would like to thank all our partners, donors and stakeholders for their support, dedication and generosity in 2020 which enables us to deliver our program to our community.*

### ADVOCACY :

IWDA - International Women's Development Agency  
Alola Australia  
BMETS - Blue Mountain East-Timor Sisters  
Timor Telecom

### MATERNAL AND CHILD HEALTH :

Child Fund Australia through Child Fund Timor-Leste  
SANTOS  
Woodside  
Alola Australia  
BMETS -Blue Mountain East-Timor Sisters  
UNICEF  
Australian Embassy support through Partnership  
Human Development (PHD)  
HALIKU Individual donor

### ECONOMIC EMPOWERMENT :

USAID Tourism for All  
Rotary Club of Kew  
Alola Australia  
Woodside  
Thai Embassy Timor-Leste  
Grameen Foundation  
Impact Traveler  
UN Women  
Tax Campaign Australia

### EDUCATION :

Australian Embassy support through Partnership  
Human Development (PHD)  
UNICEF  
ChildFund Australia through ChildFund Timor-Leste  
Alola Australia  
Individual donor



## DONORS LIST IN 2020











## FUNDASAUN ALOLA

Avenida Bispo de Medeiros,  
Mascarenhas, Dili, Timor-Leste  
PO Box 3, Dili, Timor-Leste via Darwin, Australia

(+670) 332 3855 

info@alolafoundation.org 

fundasaun.alola 

alolafoundation 

www.alolafoundation.org 

G.  
Tais - Lafek